

HH100 Hygizone Extraction - Installation Instructions

A



Installed cistern

B



Note Flush-Pipe diameter

C



55mm Flush-Pipe - drill 38mm hole
44mm Flush-Pipe - drill 32mm hole

D



Use the T-clamp to fasten Flush-Saddle to Flush-Pipe

E



Secure Flush-Saddle to Flush-Pipe

F



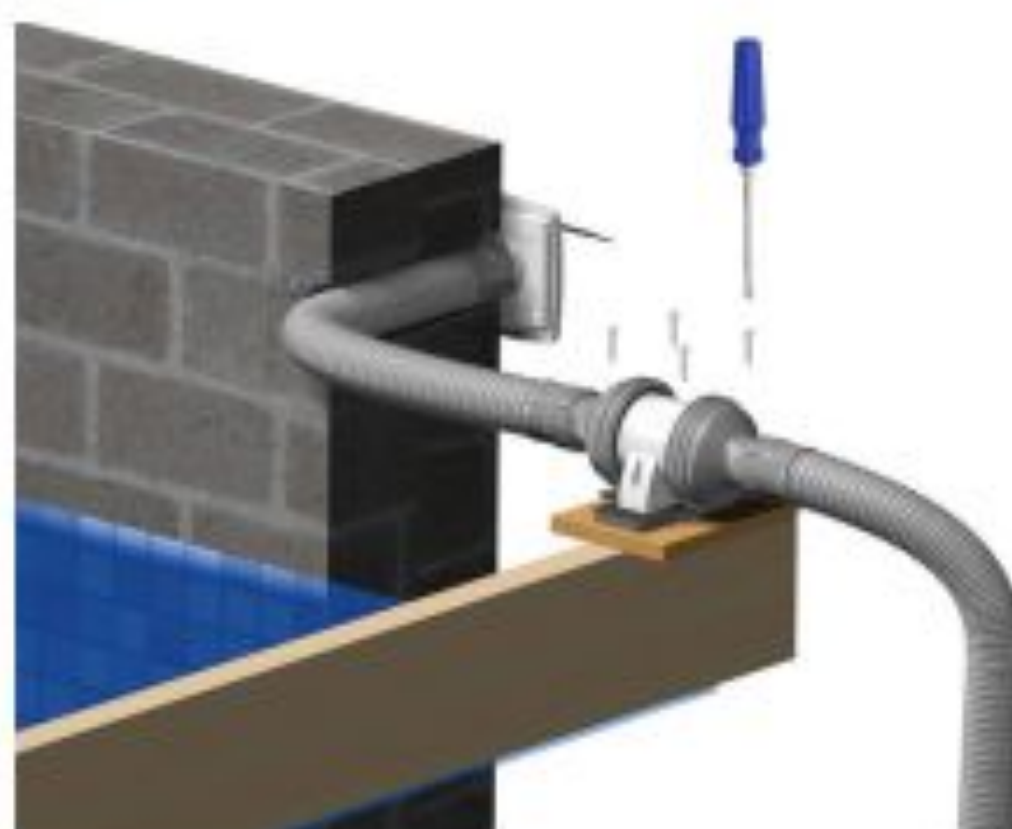
Connect 4m Hygihose to Flush-Saddle using matching colour indicators

G



Route Hygihose to ceiling

H



Secure the fan in the ceiling

I



Trim Hygihose if necessary

J



Connect Duct-Connector to Hygihose with large cable tie

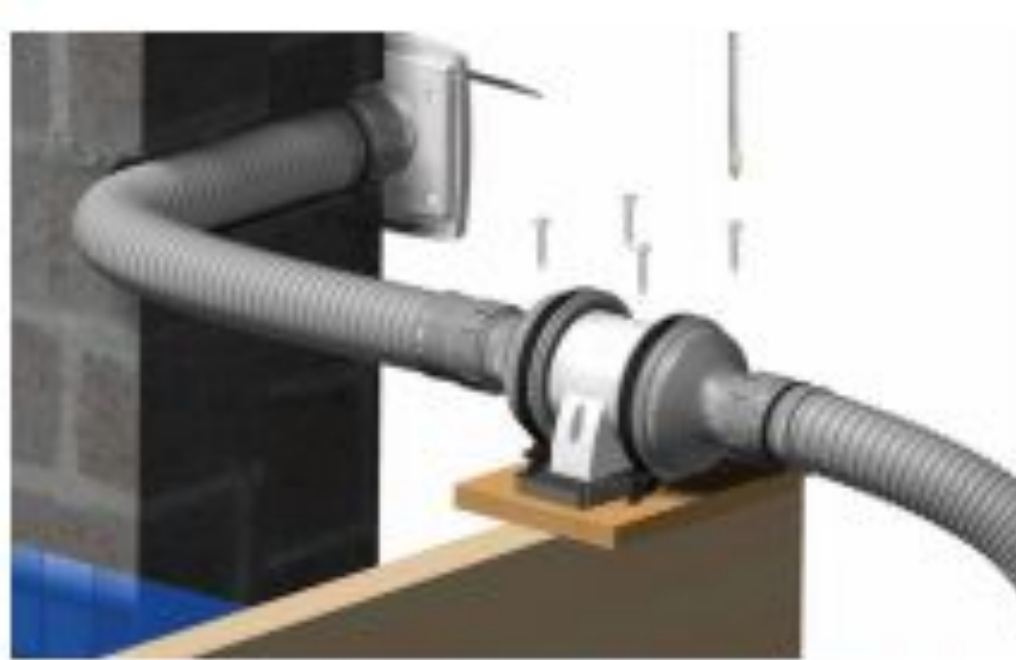
HH100 Hygizone Extraction - Installation Instructions

K



Connect Hygihose to the inline fan using the matching colour indicators

L



Route 2m Hygihose from fan to the exterior of building. Use sleeve if necessary

M



Fit external grill and connect Hygihose using matching colour indicators

Hygizone Extraction Specification Sheet:

Product

HH100

Includes: 2 x various size flush-saddles for connection to cistern flush-pipe, 4m & 2m flexible hose (55mm diameter), 12VDC fan unit (110mm diameter) & power supply, exterior extraction grille.

Material info

All fittings: ABS

Hose: Polypropylene

Power Supply:

Input: 100-240VAC 50/60HZ 0.8A

Output: 12VDC, 1A

CE

Fan:

DC 12V - 3.6W

CE cRU[®]us

Airflow:

2.6L/s @ -54Pa

Note: Please ensure that the hose is routed upward to avoid forming a water trap and to provide an unrestricted extraction channel.